

ROLLERS 75 SHORES

Caractéristiques techniques

Tyre: very thick polyurethane, hardness 75 Shore A, with excellent rolling resistance and elasticity and good resistance to wear and tear.

Uses

Innovative product that combines the load capacity and the resistance to wear and tear of the polyurethane with the ability to overcome obstacles, oise, vibration damping and impacts of the elastic rubber. Combined with appropriate brackets they guarantee excellent performance for mechanical handling up to 16 km/h. The excellent rolling resistance guarantees easy handling of heavy loads even with wheels in a small diameter. Examples of application: trolleys for the automotive industry, towing applications.

Environments of use

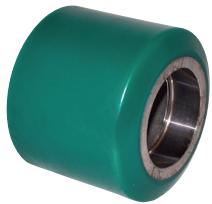
Industrial environments, even in the presence of humidity and oils. Not suitable in the presence of strong acids and solvents.

Weak Acids ●
Strong Acids ●
Water ●
Alcohol ●

Weak Bases ●
Strong Bases ●
Hydrocarbons ●
Solvents ●

Floors

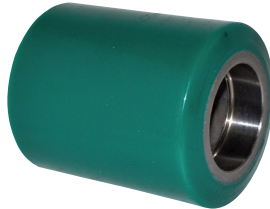
Suitable for all types of industrial floors, even outdoors. Facilitates the overcoming of obstacles. It does not damage the floors.



B2003S

82 x 70

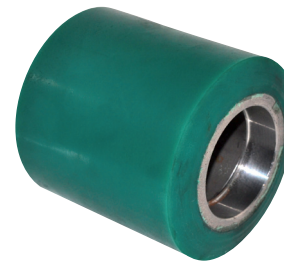
Bearing seat 47x16



B2004S

82 x 100

Bearing seat 47x16



B2046S

85 x 90

Bearing seat 47x14



B3003S

100 x 40/40 axe de 15